

Scales

major, minor (natural, harmonic, melodic)
chromatic, scale patterns

Esther Armendariz

You may alter or use these scales in the following ways to become comfortable in the key:

- Rhythm (e.g. straight quarters, halves)
- Tempo
- Articulation (e.g. staccato, slurred, glissed)
- Dynamics
- The octave played, or playing in two octaves
- Improvise a melody in that scale
- Play a song by ear in the scale

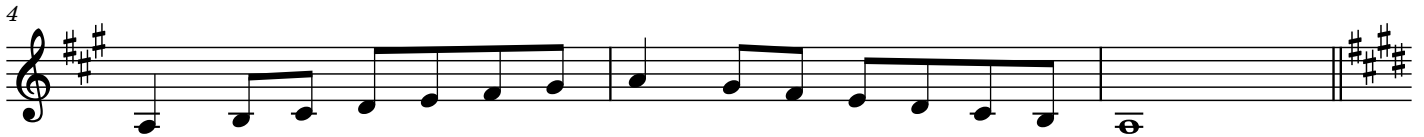
Major Scales

around circle of 5ths

D Major (concert C Major)



A Major (concert G Major)



E Major (concert D Major)



B Major (concert A Major)



F# Major (concert E Major)

The enharmonic spelling of this scale is Gb Major, which has 6 flats.



2

Db Major (concert B Major)

The enharmonic spelling of this scale is C# major, which has 7 sharps.

16

Musical notation for the Db Major scale (concert B Major) in treble clef. The scale is written in a key signature of three flats (Bb, Eb, Ab). The notes are: Bb, C, D, Eb, F, G, Ab, Bb. The scale is shown in two measures, with a repeat sign at the end.

Ab Major (concert Gb Major)

19

Musical notation for the Ab Major scale (concert Gb Major) in treble clef. The scale is written in a key signature of three flats (Bb, Eb, Ab). The notes are: Ab, Bb, C, D, Eb, F, G, Ab. The scale is shown in two measures, with a repeat sign at the end.

Eb Major (concert Db Major)

22

Musical notation for the Eb Major scale (concert Db Major) in treble clef. The scale is written in a key signature of three flats (Bb, Eb, Ab). The notes are: Eb, F, G, Ab, Bb, C, D, Eb. The scale is shown in two measures, with a repeat sign at the end.

Bb Major (concert Ab Major)

25

Musical notation for the Bb Major scale (concert Ab Major) in treble clef. The scale is written in a key signature of two flats (Bb, Eb). The notes are: Bb, C, D, Eb, F, G, Ab, Bb. The scale is shown in two measures, with a repeat sign at the end.

F Major (concert Eb Major)

28

Musical notation for the F Major scale (concert Eb Major) in treble clef. The scale is written in a key signature of one flat (Bb). The notes are: F, G, Ab, Bb, C, D, E, F. The scale is shown in two measures, with a repeat sign at the end.

C Major (concert Bb Major)

31

Musical notation for the C Major scale (concert Bb Major) in treble clef. The scale is written in a key signature of one flat (Bb). The notes are: C, D, E, F, G, Ab, Bb, C. The scale is shown in two measures, with a repeat sign at the end.

G Major (concert F Major)

34

Musical notation for the G Major scale (concert F Major) in treble clef. The scale is written in a key signature of one sharp (F#). The notes are: G, A, B, C, D, E, F#, G. The scale is shown in two measures, with a repeat sign at the end.

Natural Minor Scales or "Aeolian Mode"

Starting the scale from the 6th note of a major scale results in its "relative minor" scale.

37 B Minor (concert A Minor)



40 F# Minor (concert E Minor)



43 C# Minor (concert B Minor)



46 G# Minor (concert F# Minor)



49 D# Minor (concert C# Minor)



52 Bb Minor (concert G#/Ab minor)



4

F Minor (concert Eb minor)

55



58

C Minor (concert Bb minor)



61

G Minor (concert F minor)



64

D Minor (concert C minor)



67

A Minor (concert G minor)



70

E Minor (concert D minor)



Harmonic Minor Scales (7th scale degree raised from Natural Minor)

B Harmonic Minor (concert A minor)

73

F# Harmonic Minor (concert E minor)

76

C# Harmonic Minor (concert B minor)

79

G# Harmonic Minor (concert F# minor)

82

D# Harmonic Minor (concert C# minor)

85

Bb Harmonic Minor (concert G#/Ab minor)

88

6

91 F Harmonic Minor (concert Eb minor)



94 C Harmonic Minor (concert Bb minor)



97 G Harmonic Minor (concert F minor)



100 D Harmonic Minor (concert C minor)



103 A Harmonic Minor (concert G minor)



106 E Harmonic Minor (concert D minor)



Melodic Minor Scales

(6th + 7th scale degrees raised from Natural Minor on ascending. Natural minor on descending.)

109 B Melodic Minor (concert A minor)



112 F# Melodic Minor (concert E minor)



115 C# Melodic Minor (concert B minor)



118 G# Melodic Minor (concert F# minor)



121 D# Melodic Minor (concert C# minor)



124 Bb Melodic Minor (concert G#/Ab minor)



8

127 F Melodic Minor (concert Eb minor)



130 C Melodic Minor (concert Bb minor)



133 G Melodic Minor (concert F minor)



136 D Melodic Minor (concert C minor)



A Melodic Minor (concert G minor)



142 E Melodic Minor (concert D minor)



Chromatic Scales

Aside from developing familiarity with playing this scale, chromatic scales are a useful tool for developing high and low range, and maintaining a consistently great tone through a phrase crossing a wide range.

You may alter the range of this scale, or other aspects described on the first page as you see fit. If practicing to expand your range, begin by playing these scales all slurred.

145 G to G, two octaves (concert F)



C to C, two octaves (concert Bb)



Other Scale Patterns

Apply different key signatures to the following scale patterns. Play these scales as if they were part of a song.

159 *Sostenuto*

p

The following two rhythms can challenge valve dexterity.

167 *Marcato*

f

170 *Flip the rhythm around!*

f

173 *Smoothly*

mp

176 *Light and clear*

179